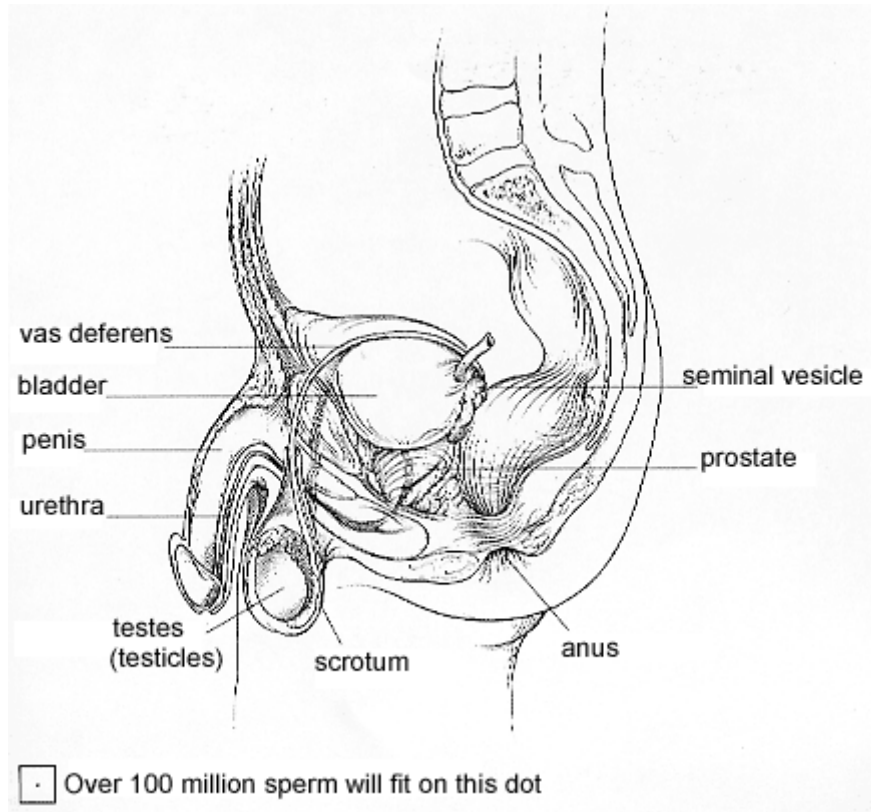


Male Reproductive System



Penis: External organ through which semen or urine leaves the body.

Testes or testicles: Two glands that produce sperm, the male reproductive cells. Sperm cells are necessary to fertilize a female's egg cell.

Scrotum: Soft external sac containing the testes.

Prostate: A gland that produces a fluid that becomes part of semen.

Seminal Vesicles: Glands located behind the bladder that secrete a fluid that forms part of semen.

Vas deferens: Narrow tubes that carry sperm from the testes to the seminal vesicles.

Urethra: A narrow tube that runs from the bladder through the penis. This provides a passageway to the outside of the body for urine or semen.

Anus: The opening through which solid waste leaves the body (not part of the reproductive system.)



Equipping Leaders Internationally
PO Box 1083
Mahomet, IL 61853
217.377.9444

Terms:

While this website is available in English only (at this time), permission for republication and distribution in different formats and translation into different languages is freely granted to community-based and not-for-profit organizations, provided the source is acknowledged and an electronic copy of any translation is supplied to ELI.

Located in Mahomet, Ill., ELI is a community-based nonprofit organization emphasizing life skills for emerging youth leaders in third world countries. ELI has been formed by Paul and Virginia who have been working with youth in United States and abroad for more than 30 years. For further information on ELI, please call (217) 377-9444.