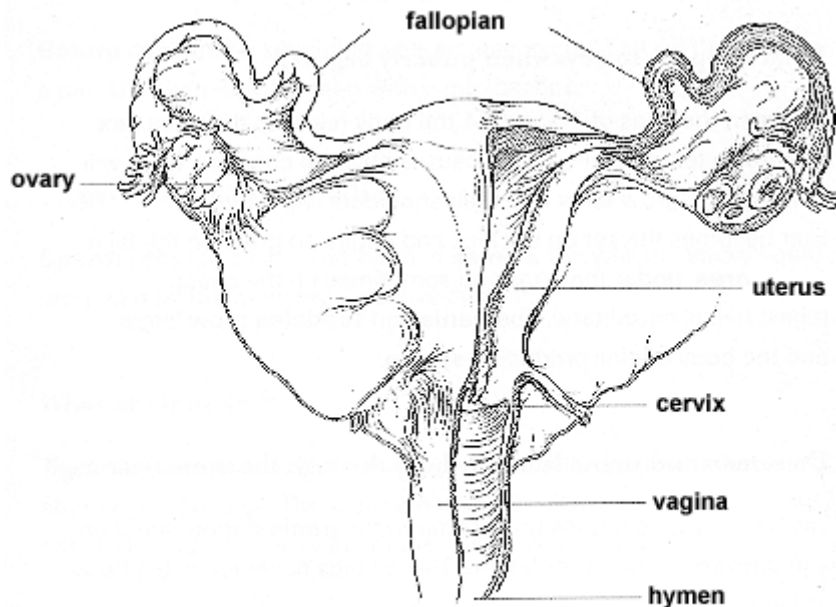
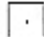


Female Reproductive System



 The size of an egg / ova

Vagina: The passageway from the uterus to the outside of the body through which the menstrual flow leaves the body. Also called the "birth canal"

Hymen: A fold of thin, flexible membrane that partially covers the vaginal opening.

Cervix: The lower portion of the uterus that opens into the vagina. The cervix is rounded and cone shaped and about one inch in length. Menstrual fluid escapes through the small opening in the cervix about the size of a pencil point.

Uterus: The organ in which a fertilized egg develops into a child. The uterus is the size and shape of a pear. It can stretch to 20 times its normal size during pregnancy.

Endometrium: The lining of the uterus made up of blood and tissue, which is shed each month if the egg is not fertilized.

Ovaries: Two glands that produce hormones and reproductive cells called ova.

Fallopian tubes: Two tubes attached on either side of the uterus through which the mature egg travels toward the uterus.

Ovum / egg: The female reproductive cell released from one of the ovaries each month. Upon release, a fully mature egg is the size of the period at the end of this sentence.



Equipping Leaders Internationally
PO Box 1083
Mahomet, IL 61853
217.377.9444

Terms:

While this website is available in English only (at this time), permission for republication and distribution in different formats and translation into different languages is freely granted to community-based and not-for-profit organizations, provided the source is acknowledged and an electronic copy of any translation is supplied to ELI.

Located in Mahomet, Ill., ELI is a community-based nonprofit organization emphasizing life skills for emerging youth leaders in third world countries. ELI has been formed by Paul and Virginia who have been working with youth in United States and abroad for more than 30 years. For further information on ELI, please call (217) 377-9444.